

## MAJOR COMPONENTS AND DIMENSION FOR WAKEI-AN

Most structural wood materials are Port Orford Cedar. We import Kitayama (Northern Mountain) Cedar from Kyoto Japan for Tokobashira and rail. You can enjoy Cedar aroma.

Those components can be assembled by professional builder. It takes about half day for two persons to assemble.

| Major Components      | Material   |
|-----------------------|--|
| A-Lattice             | Port Orford Cedar 80mm*80mm                                      |
| B-Pillar              | Port Orford Cedar for most of the structural frames              |
| C-Shoji frame         | Port Orford Cedar  |
| D-Alcove floor        | Finished with solid Sipo(Utile)                                  |
| E-Tokobashira Pillar  | Kitayama(Northern Mountain)Cedar imported from Kyoto, Japan 90mm |
| F-Wall Wall plate     | wall paper with Solid Plywood for both side of base plate        |
| G-Tokomoma Rail       | Kitayama(Northern Mountain)Cedar imported from Kyoto, Japan      |
| H-Tokonoma Tatami Mat | Surface finish with Japanese Rush with Styrofoam Core 476*1892mm |
| I-Tatami Mat          | Kyo-datami finished with Japanese Rush with Styrofoam Core       |
| J-Tatami Mat frame    | Port Orford Cedar  |

### Note for the product:

- The roof is not water-proof. This is just like interior furniture.
- The roof lattice is not covered by paper screen, but just open.
- The customer can select wall color and materials from the prepared list.
- This space can be separated by optional folding paper screen from other space of the room. The Japanese lantern is also optional.

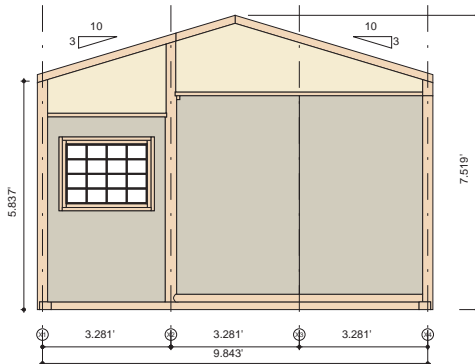
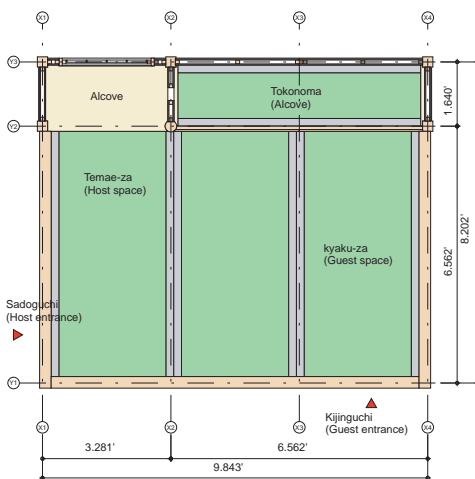
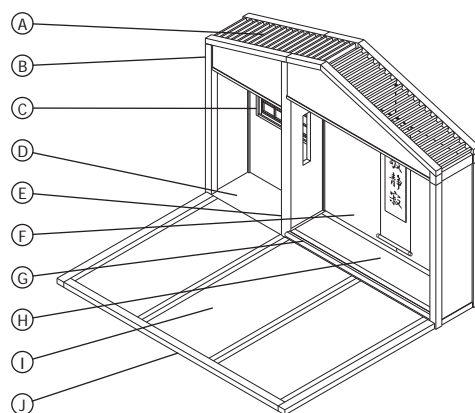
### Dimension

Actual W: 3.045m (9.99ft) x L: 2.58m

(8.465ft)H: 2.292m (7.5ft)

Between Centers of Pillars L:3m (9.8ft)

W: 2.5m (8.2ft) H: 2.292m (7.5ft)



お茶室和敬庵

# GREEN TEA ROOM WAKEI-AN

## INTRODUCTION

We design & build Green Tea Room or “Ochyashitsu” for you who wish to have it at home, garden or office in the US, Asia and others. We have three Green Tea Room concepts and design it upon your favorite, space and budget. We welcome your contact.

For those who love Japanese décor, Japanese room and Japanese tea, our architectural firm presents you with three kinds of Japanese tea room concepts and will build them wherever you live according to your preference and order:

1. A simple Japanese tea room interior like a set of furniture in your room.
2. An integrated Japanese tea room as a remodel of your room.
3. A single detached house in your garden or one attached to the main house.

## CONTACT

Email: [greentearoom@sakuraassociatesllc.com](mailto:greentearoom@sakuraassociatesllc.com) Tel: 1-415-577-1631  
Norio Komoda, US Representative of Kazuki Komoda, Architect Office  
Sakura Associates LLC Website: <http://www.greentea-room.com/>



### Kazuki Komoda Biography

Mach 2004: Established Kazuki Komoda Architects at Sakura Enterprise Corporation  
(Tokyo Governor Registration No.49668)  
[http://www.kzkmarhitects.com/lang\\_english/Aboutme.html](http://www.kzkmarhitects.com/lang_english/Aboutme.html)

- April 1995: Kenzo Tange Associates (About 7 years)
- March 1995: Master of Engineering, Department of Built Environment, Interdisciplinary Graduate School of Science and Engineering, Tokyo Institute of Technology
- March 1993: Bachelor of Engineering, Faculty of Engineering, Department of Architecture, Tokyo Institute of Technology
- March 1988: Graduated Tokai senior high school
- July 1969: Born in Kagawa, JAPAN (Growing up in Nagoya)

### Qualification

- Licensed architect, Japan
- Licensed interior coordinator, Japan Membership
- Tokyo Society of Architects & Building Engineers



## PROPOSED THREE CONCEPT OF GREEN TEA ROOM

### 1. Simple Japanese Tea Room Interior as a Set of Furniture: Wakei-An

Ready-Made Tokonoma Unit and Tatami Floor.

This is a simple Japanese tea room interior like a set of furniture in your room

The customer can use it like furniture at the corner of the living room.

- Since we mostly use real solid cedar you can enjoy the scent of woods all its own.
- Sugi and/or Hinoki or similar one locally available wood and real Japanese Tokobashira made of Kitayama Sugi (product of northern mountain in Kyoto, Japan).
- It is relatively easy to assemble, de-assemble to carry out, and re-assemble it for moving or for the Tea Ceremony event.
- It can be separated by optional folding paper screen from other space of the room.
- The 3 jyo Tatami can be folded and set aside for the other usage of its space. This product is recommended to the following customers;
- instructor of Sado or Green Tea Ceremony, who demonstrates occasionally at some event where the temporary Green Tea Room is needed
- persons who love Green Tea and practice Sado or Green Tea Ceremony. This product can be set up at the corner of your living room, office or restaurant so that you, your colleagues, guests or customers can enjoy Japanese Green Tea. This can be assembled into your room and just put like portable furniture according to your preference and convenient usage.



#### Major Components and Dimension for Wakei-An

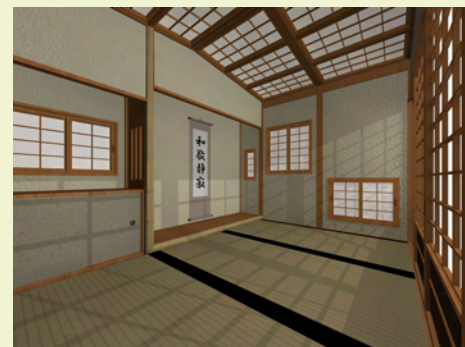
The photo shows this product with 3 Jyo (3 Tatami Mats) and can be made with 4.5 Jyo or 6 Jyo. The customers can confirm the specifications and make order request or inquiry at contact of this Website



### 2. In-house Tea Room

Your western-style room in your house can be remodeled into the in-house Green Tea Room as you like.

The photo is an example of our design of the integrated Japanese tea room interior as a remodeled western style room. You can put this as a single room at the corner of your big living room if it is big enough. Please contact us here.



### 3. A single Japanese Green Tea House in your garden

This can be a single detached or attached tea house in your garden, just like a guest house.

The photo right is a Japanese Tea House Rinshunkaku located in Sankeien.



## EXTERIOR AND INTERIOR OF TRADITIONAL GREEN TEA HOUSE

Here the famous traditional tea houses will be introduced by photographs, which shows good ideas to you who would like to have your own tea house in your garden. We categorize single Tea Houses into "Small Single Tea House" and "Large Single Tea House". Both of them can be either tea houses as detached or attached to main buildings.

### (1) Landscape and Garden of Single Japanese Green Tea House

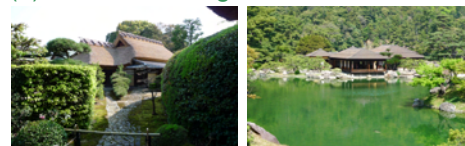
For Japanese Green Tea House the landscape, garden and surrounding nature are important factors. Those are all in our scope of design work.



### (2) Exterior of Small Tea House



### (3) Exterior of Large Tea House



### (4) Interior of Tea House

These are typical and famous interior of Small Single Tea House. You will see the design of the small entrance, Shoji or paper screen sliding door, Tokonoma, etc.

